



# INDOFINE Chemical Company, Inc.

121 Stryker Lane, Bldg. 30, Suite 1 • Hillsborough, NJ 08844 • U.S.A.

Phone: (908) 359-6778 • FAX: (908) 359-1179

website: [www.indofinechemical.com](http://www.indofinechemical.com)

e-mail: [chemical@indofinechemical.com](mailto:chemical@indofinechemical.com)

## CERTIFICATE OF ANALYSIS

Catalog Number: 021338

Product Name: **KAEMPFEROL-7-O-GLUCOSIDE**  
(Kaempferol-7-O-beta-D-glucopyranoside; Populnin)

Cas Number: [16290-07-6]

Lot Number: 1601729

Chemical Formula: C<sub>21</sub>H<sub>20</sub>O<sub>11</sub>

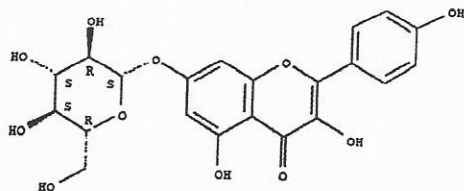
Molecular Weight: 448.38

Appearance: Beige powder

Loss on Drying: 1.4%

Storage: Store in a cool, dry place. Protected from light.

Purity(HPLC): 99.63%





# INDOFINE Chemical Company, Inc.

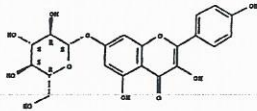
121 Stryker Lane, Bldg. 30, Suite 1 • Hillsborough, NJ 08844 • U.S.A.

Phone: (908) 359-6778 • FAX: (908) 359-1179

website: [www.indofinechemical.com](http://www.indofinechemical.com)

e-mail: [chemical@indofinechemical.com](mailto:chemical@indofinechemical.com)

## HPLC ANALYSIS



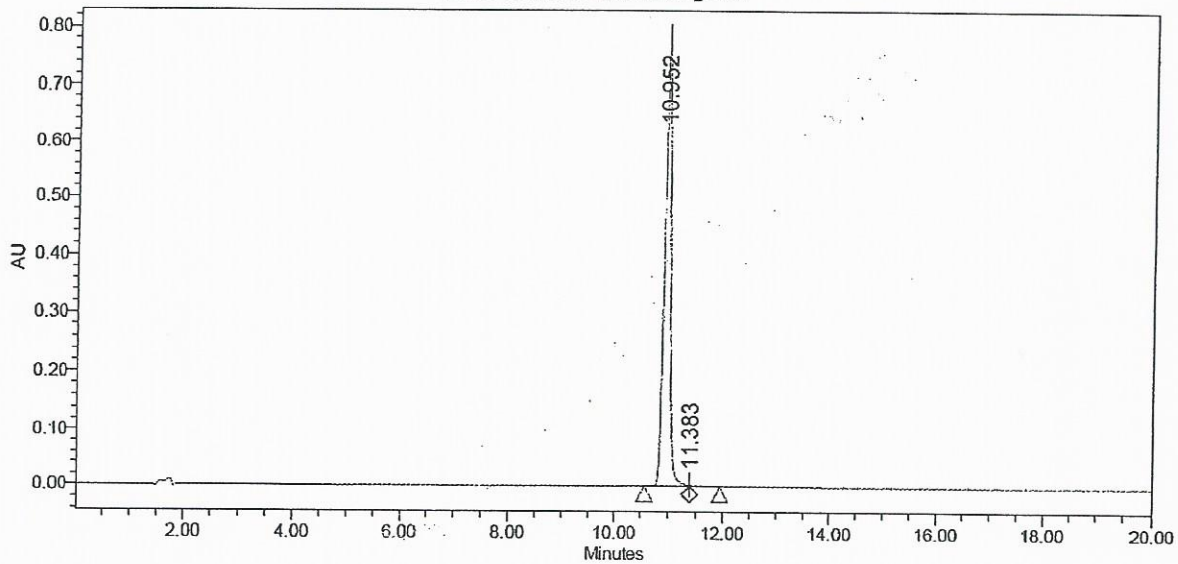
Catalog No.: 021338  
Product Name: Kaempferol-7-O-glucoside  
Lot No.: 1601729

### SAMPLE INFORMATION

Sample Name: Kaempferol 7 glucoside  
Sample Type: Unknown  
Vial: 22  
Injection #: 1  
Injection Volume: 10.00 ul  
Run Time: 20.0 Minutes

Sample Set Name:  
Acq. Method Set: Kaempferol 7 glucoside  
Processing Method: Samples  
Channel Name: 360.0nm  
Proc. Chnl. Descr.: PDA 360.0 nm

Auto-Scaled Chromatogram



Peak Results

Name	RT	Area	% Area	USP Plate Count	USP Resolution
1	10.952	6029896	99.63	49263.66	
2	11.383	22562	0.37		2.12